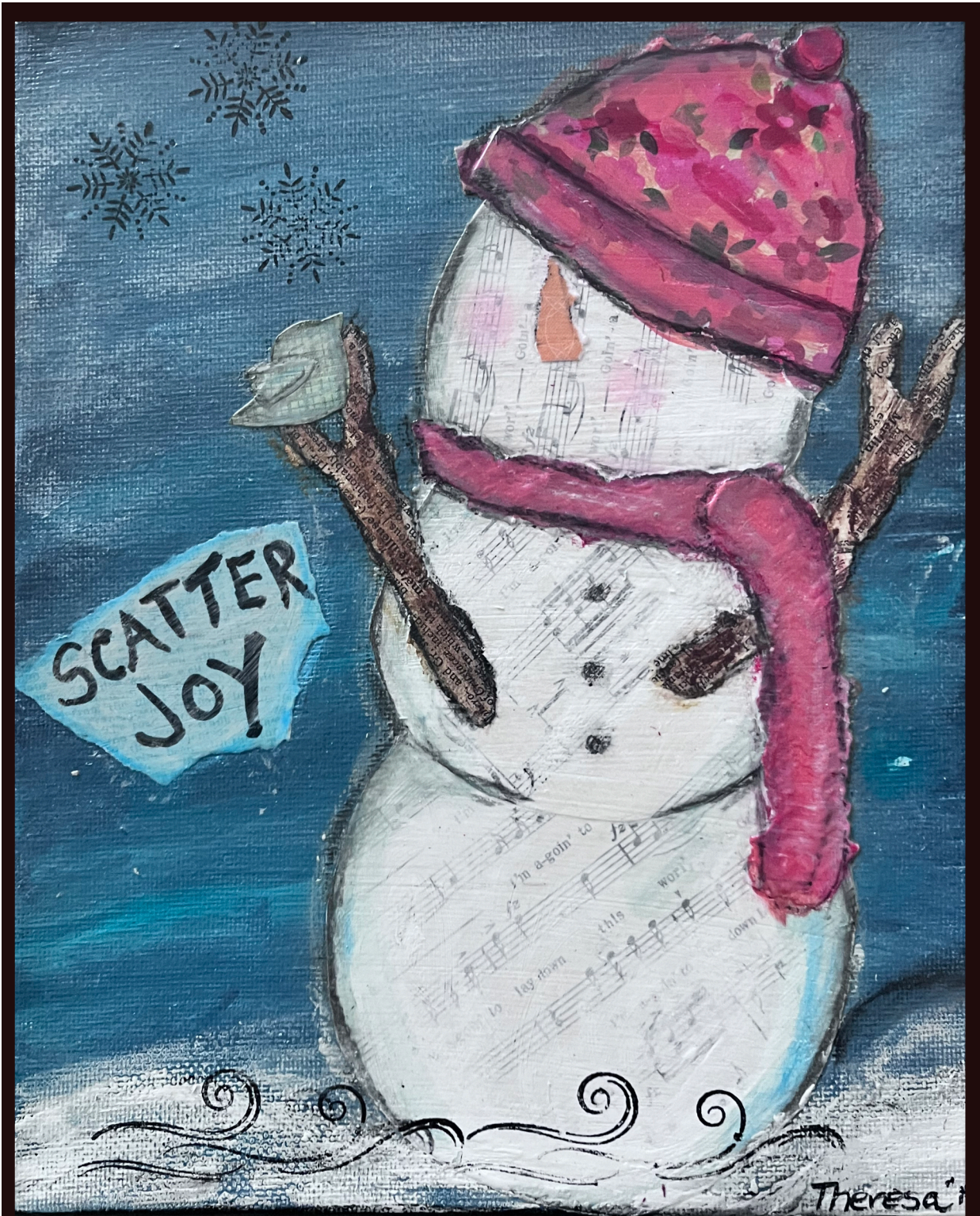


NEWS

Federated Garden Clubs of Iowa

Winter 2026





Federated Garden Club of Iowa, Inc.

<https://federatedgardenclubsofiowa.com>

President: Shirley Wolf

“Our Pollinators Still Need Help”

MEMBER OF



Central Region Garden Clubs, Inc.

ngccentralregion.com

Director: Rene Lynch

Plant America “Progress is possible”

Member of



National Garden Clubs, Inc.

4401 Magnolia Ave.,

St Louis, MO 63110

<https://gardenclub.org>

President: Donna Donnelly

Plant America “For the next 100 Years”

The News of The Federated Garden Clubs of Iowa, Inc. Is a tax exempt, nonprofit organization under IRS ruling 501(c)3.

MISSION STATEMENT: To stimulate knowledge of gardening; to aid in the protection of trees, plants and birds; to promote beautification.

IN THIS ISSUE

Presidents Message	3
Calendar	4
Announcements	5
Committee reports	6
Districts and Clubs	7
Club News	8
Committee reports	12
FGCI State Flower show Schedule	14

“Happiness Held is the seed: Happiness shared is the Flower.”

<https://federatedgardenclubsofiowa.com>



Scan QR code with smart phone camera and you will be directed to our web page

PRESIDENT'S MESSAGE



“Our Pollinators Still Need Help”

I was at the Regional meeting in October along with two other from Iowa. I had a wonderful time hearing from other state presidents and their problems. The Osthoff Resort was great. We will vote on a new Regional President from Iowa at our State meeting June 16, 2026.

Our flower show on June 15, 2026 will be America the Beautiful, a petite show. It will be fun to work with red, white and blue. It is very fitting with the National Presidents awards for Plant America are Red White and Blue.

State meeting will be held in Jefferson, Iowa. June 16, 2026 at the Wild Rose Casino. If anyone has any business to discuss at the afternoon meeting, let me know. Hopefully I will be at all the Iowa District meetings this Spring.

The flower show is published without consultants name listed, for their protection. The complete show will be in the mail after the first of the year. This will give you some time to plan what you want to do. In horticulture, my club has a lot of fun with collections and displays. If you have 5 of an item that would be in the same class, it's a fun way to display them. Just remember it is a petite show. Check out the Botanical Arts, you can do ahead this winter.

Merry Christmas and a wonderful New Year
Shirley

FGCI District Directors

District I - Marianna Haas

District II - Ruth Hamilton

District III - Teri Ewers

District IV,V,VII - Shirley Wallace

District VI - Shirleen Helgeson

District VIII - Mike Becker



Federated Garden
Club of Iowa Officers
2025-2027



**President
Shirley Wolf**

**President - Elect
Jean Klosterman**

**1 Vice President &
Awards Chair
Peg Egertsen**

**2 Vice President
Angie Wilkins**

**Treasurer
Heidi Folkestad**

**Secretary
Sue Becker**

Announcements



Notice

Address Changes

Please note the post office does not forward this publication.

Please send to address changes to State Treasurer

Heidi Folkstad

If you winter or summer please let her know the changes.

Circle of Roses form due April 1st
Send form to 2nd Vice-President Angie Wilkins

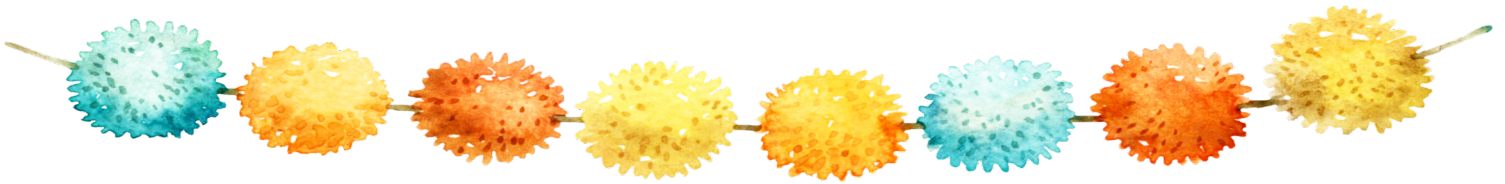
[Click for Circle of Roses form](#)



Don't forget to pay your State Dues and your District Dues

National Convention
May 4-6th 2026
St Louis, MO
More information will be available after Jan. 5th on the National website:
gardenclub.org





2026 FGCI Membership Renewal

The 2026 membership listings for dues renewal were mailed to each club Treasurer on December 15, 2025. If you are the club treasurer and you haven't received your club listing by now, please contact me immediately. I can either send a copy to you by email or put another paper copy in the regular mail.

Please look over your club roster and correct any mistakes, note address changes, add new members, and delete persons no longer in your club. Also indicate if your club has had officer changes and identify which members are club officers.

Please make all changes on the bottom or back of the original membership listing you received from me and return it along with your club dues of \$10 per member. We will need your changes by February 10th to meet the Spring NEWS mailing deadline. **However, to qualify for the Blue Ribbon Award, your club must pay dues by February 1st, 2026.**

Please send the check for your club dues payable to Federated Garden Clubs of Iowa (or FGCI) with the updated list to me at the address below.

When sending your club dues, you may also include your club contributions to the FGCI Horticulture and Landscape Design Scholarship funds if you wish. We award the scholarships in June each year. To be included in the 2026 awards, we need your donation by May 1st, 2026.

Please use the New Member Enrollment form on <https://federatedgardenclubsofiowa.com> to report member additions to your club. Also, as other changes occur in your membership during the year, please let me know as each returned copy of the NEWS costs us additional postage.

Thank you,
Heidi Folkestad, FGCI Treasurer



Districts and Clubs

DISTRICT IV, V, VII

ACKWORTH GARDEN CLUB
 AFTON GARDEN CLUB
 AMES GARDEN CLUB
 BAXTER GARDEN CLUB
 CENTERVILLE GARDEN CLUB
 GRANT SUNSHINE GARDEN CLUB
 GREATER DES MOINES GARDEN CLUB
 KNOXVILLE GARDEN CLUB
 PELLA GARDEN CLUB
 WOODLAND HILLS GARDEN CLUB, DES MOINES AREA

SHIRLEY WALLACE, Director

DISTRICT I

KEOKUK GARDEN CLUB
 MUSCATINE GARDEN CLUB
 TIPTON GARDEN CLUB

Marianna Haas, Director

DISTRICT II

GOOD EARTH GARDEN CLUB, CEDAR RAPIDS
 INDEPENDENCE GARDEN CLUB
 QUASQUETON GARDEN CLUB
 TOWN AND COUNTRY GARDEN CLUB, DECORAH

Ruth Hamilton, Director

DISTRICT VI

ESTHERVILLE GARDEN CLUB
 FORT DODGE FEDERATED GARDEN CLUB
 KOSSUTH AREA GARDEN CLUB, Algona
 MADRID FEDERATED GARDEN CLUB
 PALO ALTO GARDEN CLUB
 TOWN & COUNTRY GARDEN CLUB, WEBSTER CITY

Shirleen Helgeson, Director

DISTRICT III

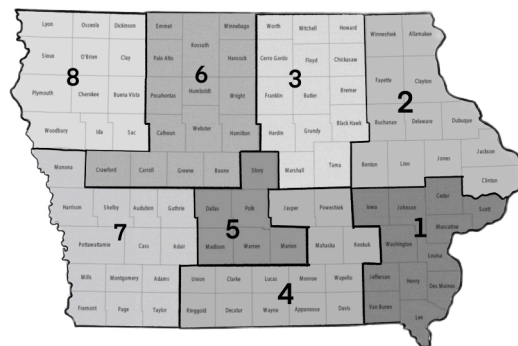
BETTER HOMES AND GARDEN CLUB, RADCLIFFE
 GREEN THUMB GARDEN CLUB, NORTHWOOD
 MARSHALLTOWN GARDEN CLUB
 SWALEDALE GARDEN CLUB

Terri Ewers, Director

DISTRICT VIII

FLOYD VALLEY FEDERATED GARDEN CLUB
 CLAY COUNTY FEDERATED GARDEN CLUB

Mike Becker, Director



NGC Conservation pledge

"I pledge to protect and conserve the natural resources of the planet
 earth and promise to promote education so we may become caretakers
 of our air, water, forest, land, and wildlife."

Club News

District III GREEN THUMB GARDEN CLUB, NORTHWOOD

In August the program was about the pros and cons of terra-cotta flower pots. Also some uses for pine cones. The club also delivered Meals on Wheels.

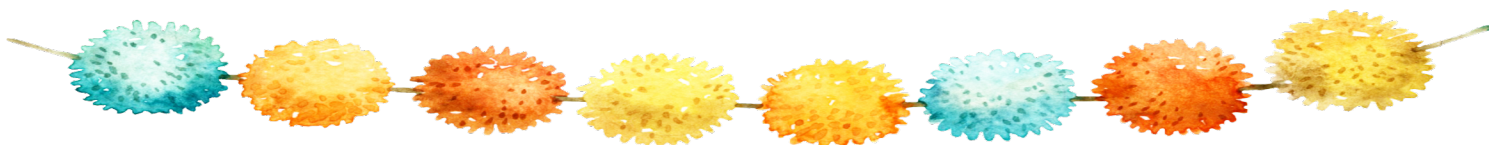
Our September meeting had a very interesting meeting about Cicely Mary Barker. We saw some pictures of her drawings of flowers, fairies and gardens.

In October we learned more about pumpkins.

At our November meeting, we were told about Creative designs versus Traditional designs. Also had some designs showing Transparency design. The club also brought items for the local Manna office.

We closed out the year with a Christmas party at one of our members' home which was beautifully decorated.

- Jean VanVeldhuizen



District IV,V ands VII Baxter Garden

Baxter Garden Club has had a fun busy year.

We enjoyed learning about how to support pollinators. We welcomed the Central Iowa Bee Queen to one of our meetings. This fall we listened to a program on growing and caring for Mums.

In addition to those activities we went on several road trips to the Tin Roof Vineyard, Appleberry Farm, a member's flower garden, as well as the Jasper County Master Gardener's greenhouse and garden house.

A few of our projects have been -

- Purchasing more flower planters through a grant we had received.
- We purchase and help plant trees in our local parks.
- Club members donated to the local Food Pantry.
- The Club seasonally designed and cared for the city of Baxter's main street planters.
- We continued our Yard of the Month program and added a fall and Christmas Yard decorating contest.
- Our club decorated a Christmas tree for the Jasper County Museum Tree-mendous Christmas Tree Experience.

Members will end the year with our Christmas potluck and make plans for the New Year.

Club News

District IV,V ands IIV Greater Des Moines Garden Club

Greater Des Moines Garden Club has finished our Blank Park Zoo Project for the year. We had planted the ten flowerpots outside the entryway and 6 more inside near the Red Panda exhibit. The pots are approx. 36 inches in diameter and 36 inches tall. We also had a flower garden near the Flamingo/Discovery building. We had various annual plants in the 10 x 17-foot area. The project was well received by the Zoo as well as the visitors of the Zoo. Blank Park Zoo is in the process of re-arranging some of the exhibits. We will be choosing a new area for our flower garden in March with the Zoo's guidance.

We will be returning to the Greater Des Moines Botanical Center for the year 2026, with our usual field trips in June and July. We meet at 1:00 each 4th Thursday of the month (excluding Thanksgiving-we meet the 3rd Thursday).

- Nancy E. Stanbrough



We may think we are nurturing our garden but of course, it's our garden that is really nurturing us.

Club News

District IV,V ands IIV Ackworth Garden Club

What a year we had! We started the year with a fun make- and- take using moss. Everyone had fun using our creative minds to create unique projects. The club learned about Teas and Spices,

Garden Tool Maintenance and of course we held our annual plant sale May 10th where we earned \$3900. The club really goes all out and it would not be a success with out the hard work of club members.

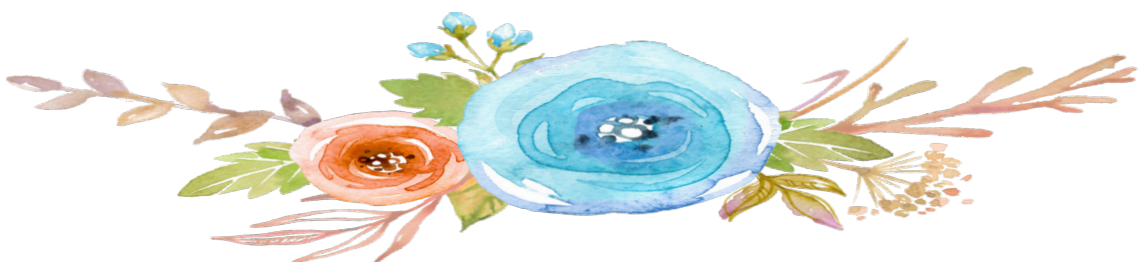
Ikebana, Joys of Herb Gardening and Cooking with Mary Jane Miller were other scheduled programs. Yes, Ackworth Garden Club is so posh we even have our own chef! Mary Jane has generously catered the club holiday party in December the last 2 years. Just like Caitlin Clark, the Ackworth Garden Club scored with Mary Jane!

Warren County Ag in the Classroom was presented by Keisha Thompson, what a great opportunity for us and the youth of Warren County.

Another fun event was a joint meeting we had with the Grant Sunshine garden club. Ackworth garden club car pooled and visited a daylily farm. Afterwards they hosted a wonderful lunch forus to enjoy. What a lovely club!

All of this, great friends and food, how can you go wrong!

-Tracy Mullins, Ackworth Garden Club, President



Club News

District III MARSHALLTOWN GARDEN CLUB

On December 1, the club celebrated the close of another busy and successful year with the annual Christmas party that featured a very short business meeting followed by some members sharing their holiday memorabilia that included family heirloom antiques, photos, favorite holiday music and movies, and even some fun and funky decorations. A drawing was held for a dozen \$10 dollar gifts cards to area businesses. Non-perishable food and personal care items were collected and contributed to Marshall County Extension to assist with its community pantry project.

2025 programs covered a range of topics. We kicked off the year by hosting a three-generation family flower farm in Marshall County that focuses on avoiding the use of chemical fertilizers and pesticides. Then, Nicole Jonas from Red Granite Farm presented her power point that outlined the plethora of plants, produce and more she and her family raise on their 5-plus acre farm for sale at the Ames farmers market and through their onsite garden center. We learned about the miles of trails, educational opportunities or more from Marshall County Conservation, growing dahlias, Iowa prairies from the Tall grass Prairie Center, Iowa's Big Tree program, enjoyed (and purchased!) rustic garden art recycled from metal and found objects, and learned about Iowa's bees from Rieman Garden's Nathan Brockman.

Programs presented by the Marshalltown Garden are always free and open to the public.

We wrapped up our garden project with the Kiwanis Aktion Club, a group of about 35 handicapped adults. The possibility of this project began in 2024 and came to fruition this spring with the installation of two 4x8 raised beds. The treated lumber and fill dirt was purchased by the club. With a little help from club members, Aktion Club folks filled them with an assortment of vegetable plants, herbs and flowers.

Again this year, we held plant sales in May and September. Not only do the two three-hour sales events add to the club treasury, they provide us with an opportunity to connect people from Marshalltown and surrounding communities with healthy plant material and our educational expertise. All of that for a free will donation! Priceless. As always, unsold plants were donated to Riverside Cemetery for inclusion in the many flower beds located throughout the grounds.

Club members toured the Arboretum near Madrid and learned about the new Treehouse as well as the testing gardens. In memory of her husband Gene, Ruth Yordy purchased and donated 300 daffodil bulbs to Marshalltown's historic Riverside Cemetery. For the second consecutive year, Marshalltown Garden Club assisted with the seed exchange program at the Gutekunst Library in State Center.

We hold our meetings at the Marshall County Extension office at 10:30 a.m. generally the first Monday of the month February through December. We will continue this partnership through 2026.

Our theme this year was "Play in the Dirt." Why? Because life is too short to have clean fingernails!

-Jean Klosterman

COMMITTEES

FGCI MEMBERSHIP

Sela Bryhne

LIFE MEMBERSHIPS

Lizzie Pruisner

HISTORIAN

Sandra Gossman

JUDGES COUNCIL

Peg Egertsen

FGCI FLOWER SHOW SCHOOL

Terri Ewers

PARLIAMENTARIAN & PROTOCOL

Walt Reemtsma

ENVIRONMENTAL SCHOOL
GARDENING SCHOOL
LANDSCAPING DESIGN SCHOOL

Victoria Rute

The Editor of the FGCI NEWS/Website

Theresa Cooper

FGCI AWARDS

Peg Egertsen

FGCI SCHOLARSHIPS

Pat Thiede

FGCI YOUTH ACTIVITIES

Ruth Hamilton

FGCI BLUE STAR MEMORIAL MARKERS

Jane Whitmore

FGCI Plant a Tree

Sue Becker

FGCI PLANT IT PINK

Janice Reemtsma

ARBOR DAY/TREES

Penny Robb

BIRDS

Debbie Lewiston

BUTTERFLY/BUTTERFLY GARDENS

Sandy Quam

CONSERVATION

Jean Klosterman

GARDEN THERAPY

Jean Van Veldhuizen

INVASIVE SPECIES

Darla Kickbush

OPERATION WILD FLOWERS

Darla Kickbush

RECYCLE, REUSE & REPURPOSE

Deb Specht



Committee reports

PLANT A TREE

Do you ever wonder why some trees keep their leaves in the Winter instead of dropping them in the Fall? It's called "Marcescence." It's a way some trees can photosynthesis in the Winter months, just not as much as in the Summer months. It's an energy boost during the dormant season.

Tree ID

American Sycamore (*Platanus Occidentalis*) is a very easy tree to ID, Winter or Summer. If you look towards the top of the tree, you will see molted bark, camouflage colors of tan, brown, grey and white. Native to Eastern and Central US. It thrives in moist soils. If you are by a river, look closely as you are bound to see a Sycamore tree. I have seen them in town as well.

Thanks to all that donates to Plant a Tree.

Susan Becker Plant a Tree Chairperson

Congratulations goes out to Town and Country GC and Ackworth GC for their outstanding contribution to supporting trees.



FGCI Life Membership

A FGCI Life Membership is a great way to honor someone. The \$25.00 application fee is currently applied to our scholarship program but may be directed to other special projects as designated by the FGCI Executive committee.

Please check our website: federatedgardenclubsofiowa.com or the most recent newsletter for a current form. The updated form provides additional information.

Please note that if you need the pin to be mailed, an additional charge for postage needs to be added to your payment. There is not a set amount as postage charges keep changing.

Feel free to call or text me at 515-669-7151 if you have any questions.

Thank you!

Lizzie Pruisner

FGCI Life Membership Chair

My contacts are in the Printed Fall issue of the NEWS under committees

[Click here for the Life Membership form](#)

FGCI 2026 Flower Show schedule

America the Beautiful

GENERAL RULES

1. This Flower Show conforms to the standards established by National Garden Clubs, Inc, (NGC). [The Handbook for flower Shows](#) (HB), 2017 Edition, with revisions printed in The National Gardener Magazine (NG) is the authority for all issues not covered by the schedule, which is the law of the show.
2. 3. 4. Only members of a FGCI Garden Club and invited guests may enter the show. Horticulture entry cards will be available the day of the show. Entries in the Design Division must be pre-registered with the consultant for each design class. See class for name, phone number, and/or email. The Design Entries Chair will prepare all entry cards for all design classes and give them to the design exhibitors on the day of the show.
5. 6. 7. Each Exhibitor is limited to one entry per class except in the Horticulture Division. All exhibits will be accepted from 11am-3pm on Monday June 15, 2026. Judging will begin at 4 pm June 15, 2026. Only Show Chairs, Classification Chairs, Judges and clerks will be allowed on the show floor during the time of judging. Judging will be by the NGC Standard System of Awarding, HB p.5 and any additions found in the National Gardener.
8. The Classification Chairs for each Division checks exhibits for conformity to the schedule prior to judging. Final determination for conformance is the Judges responsibility.
9. The General Chairs and the Classification chairs must be available during all judging for possible consultations. They along with the Judges and Clerks, are the only personnel allowed on the floor during judging.
10. The decisions of the judges are final. Awards may be withheld if not merited.
11. There must be an emphasis on fresh and/or dried plant material. No artificial plant material will be allowed in a division.
12. The Federated Garden Clubs of Iowa will strive to assure the safety of all items after arrival and placement, but is not responsible for any loss or damage to exhibits.
13. Plants on the state's endangered or conservative plant list must be grown by the exhibitor or collected in a legal manner and so identified. (State policy prevails). Noxious weeds and plants on the state's invasive plant list Are not permitted in any Division. List of Noxious weed can be downloaded at:
<https://crops.extension.iastate.edu/encyclopedia/iowas-noxious-weed-law-chapter-317>

AWARDS

NGC Standard system of Awards

- Only one first place (blue) ribbon per class or sub-class. Must score 90 or above.
- Only one second place (red) ribbon per class or sub-class. Must score 85 or above.
- Only one third place (yellow) ribbon per class or sub class. Must score 80 or above.
- One or more honorable mention (white) ribbons as merited. Must score 75 or above.

Horticulture NGC Top Exhibitor Awards

- The Award of Horticulture Excellence will be offered in Division I, Horticulture. (See Handbook, P 40).
- Arboreal Award will be offered in Division I, section E. (See Handbook, P 40).
- Seven Awards of Merit will be offered in Section A, B, C, D, F, G, H, (See Handbook, P 41).

Collectors showcase may be offered for the highest blue ribbon winner scoring 95 points or above and correctly named in class I and J.

Design Division NGC Top Exhibitor Awards

The Award of Design Excellence will be offered in Division II, Design. (See Handbook, P 42).

One Tri-color Award will be offered in Section A. (See Handbook, P 43).

One Distinction Award will be offered in Section B. (See Handbook, P42).

One Designers Choice will be offered in Section C. (See Handbook, P 42).

One Table Artistry Award will be offered in Section D. (See Handbook, P 43).

Botanical Arts NGC Top Exhibitor Awards

One Botanical Arts Artistic Crafts Award will be offered in Section A. (See Handbook, P 44).

Other Awards

Two Sweepstake Awards will be offered-One in Horticulture Division and one in the Design Division, Counting only blue ribbons. Red ribbons will be counted to break ties. (See Handbook, P 46)

Federated Garden Clubs of Iowa Certificates of Excellence (formerly Traveling Trophies)

The following Certificates of Excellence will be available to members of the FGCI.

Horticulture Division

Rusk Certificate of Excellence to the Award of Horticultural Excellence winner.

Smith Certificate of Excellence to the Horticulture Sweepstakes winner.

Otto Certificate of Excellence awarded by the State President and Flower show Chairmen to a worthy exhibit in the Horticulture Division that did not receive and NGC Top Exhibitor award.

Design Division

Williamson Certificate of Excellence to the Designer's Choice Award winner.

Barb Sylvester Certificate of Excellence to the highest scoring Award winner. (Petite)

Thomas Certificate of Excellence to the highest scoring Novice winner. (Design must score 90+)

Mable Prior Certificate of Excellence to any worthy design exhibit (90+) by a designer other than a judge.

Willasson Certificate of Excellence to the Design Sweepstakes winner.

Davidson Certificate of Excellence awarded by the State President and Flower Show Chairmen to a worthy exhibit in the Design Division that did not receive a NGC Top Exhibitor Award.

Fran Smith Certificate of Excellence for the best second place floral design in the show.

Division I Horticulture

"Beautiful Patriotic Songs"

Award of Horticulture Excellence Offered

Horticulture Rules

The NGC Policies are printed in the Handbook for Flower Shows Chapter 6, Exhibiting in the Horticulture Division. Page 61, VI Petite Horticulture.

The rules for a single species cut or container grown specimen are listed in the Handbook for Flower Shows or its supplement, Horticulture Exhibiting and Judging.

The Definition of Petite Horticulture: Naturally small growth, or those designated as dwarf or miniature varieties or cultivars by nurseries and plant societies

4. Specimens with a class designation in the schedule may not be entered in the “any Other Worthy Class.
5. 6. All plant material must be fresh and have been grown by the exhibitor. Exhibits must have been in the possession of the exhibitor for no fewer than 90 days. Exception: early maturing seeds/transplants and forced bulbs, corms/tubers/rhizomes, and early maturing crops. Arboreal require ownership of 6 months. Refer to the chart on (HB p.55) for species.
7. 8. Entry cards (HB p. 57) fill out in pencil or waterproof ink. Plant material must be in its natural state and may not be altered by the application (treatment) of oil, commercial “shine” products, etc. that artificially change the natural color and texture.
9. Cut specimens must be displayed in clear bottles provided by the exhibitor of suitable and proportionate to specimen. Cut specimens should not have foliage below the water line.
10. All specimens should be correctly labeled with their binomial names or the currently accepted scientific identification for their educational value. Common name may also be added (HB p. 53-54) Specimens with a class designation in the schedule may not be listed in the “any other worthy” class.
11. An exhibitor may make more than one entry per class if each entry is a different species, variety, cultivar, type or color.
12. Wedging in the neck of a container to improve the pose of the specimen is permitted. Wedging may be visible but must not detract from the cut specimen. Plastic wedging to be provided by exhibitor.
13. Double potting is permitted, but the inner pot must not be visible.
14. The Classification Chairmen have the authority to subdivide classes by color, form, size, variety, cultivar or other distinguishing characteristics. (HB p. 3-4).
15. The Scale of Points for judging horticulture is listed on (HB p. 129).

DIVISION I HORTICULTURE “BEAUTIFUL PATRIOTIC SONGS”

SECTION A -ANNUALS “You’re In The Army Now”

- Class 1 *Ageratum*, 1 stem
- Class 2 *Angelonia augustifolia* Angelonia, 1 bloom
- Class 3 *Antirrhinum* Snapdragon, 1 stem
- Class 4 *Asteraceae zinnia* Zinnia, 1 disbudded stem
- Class 5 *Balsaminaceae* Impatiens, 1 stem
- Class 6 *Begoniaceae Begonia*, Fibrous rooted, 1 stem
- Class 7 *Calibrachoa* Million Bells, 1 spray
- Class 8 Celosia, 1 stem
- Class 9 *Centaurea cyanus* Bachelor’s Button, 1 stem
- Class 10 *Solenostemon scutellarioides* Coleus leaf 1” wide or smaller, 1 stem
- Class 11 *Dianthus* Annual Pinks, 1 stem
- Class 12 *Diascia* Twinspur, 1 Spray
- Class 13 *Lantana*, 1 stem
- Class 14 *Lobularia* Alyssum, 1 stem
- Class 15 *Solanaceae* Petunia, 1 spray
- Class 16 *Tagetes* Marigold See HB 142
 - a. 1 disbudded stem with large blossom
 - b. 1 spray
- Class 17 *Thymophylla* Dahlberg Daisy, 3 blooms
- Class 18 *Verbena*, 1 stem
- Class 19 *Violaceae* Viola or Pansy, 3 identical blooms without foliage
- Class 20 Any other miniature annual, named, 1 stem, bloom, or spray

Section B- Perennials “Blowin` In the Wind”

- Class 21 *Aquilegia* Columbine, 1 spray
a. single b. double
Class 22 *Campulacae* Bellflower, 1 stem
Class 23 *Coreopsis* Coreopsis, 1 bloom
Class 24 *Dianthus* Pinks, 1 stem
Class 25 *Dicentra* Fern-leaf bleeding heart, 1 stem
Class 26 Grasses and Sedges (must be fresh), 5 stems
Class 27 *Gypsophila* Baby’s Breath, 1 spray
Class 28 *Hemerocallis* Daylily, 1 stem
a. 2” or less
1. Single
2. Double
b. Over 2” and up to 3 “
1. Single
2. Double
c. Over 3” and up to 4 1/2”
1. Single
2. Double
Class 29 *Hueuchera* Coral Bell
a. 3 leaves (foliage)
b. 3 blooms
Class 30 *Hosta* Hosta, 1 leaf, based on mature size
a. Less than 1” across
b. 1” but less than 2”
c. 2” up to 4”
Class 31 *Nepeta* Catmint, 1 stem
Class 32 *Platycodon grandiflora* Balloon flower, 1 stem
Class 33 *Sedum*, 1 stem
Class 34 Any other **small** perennial, named, 1 stem, bloom or spray

SECTION C- BULBOUS “Anchors Away”

- Class 35 *Allium*, 1 stem
Class 36 *Lilium* Miniature Lily, 1 stem, anthers present named
Class 37 *Fritillaria meleagris* Fritillaria, 1 specimen
Class 38 Any other flowering bulb, corm or tuber, 1 stem named

SECTION D- Rosa MINIATURE-FLORA ROSES “The Spirit Of America”

Exhibited in water with two sets of leaves. See HB pp. 147-148 “A high scoring miniature has two or more fresh florets in bloom, buds in all stages of development, and more

open blooms than buds.”

- Class 39 Micro-miniature rose, 1” or less
a. single bloom
b. spray
Class 40 Miniature rose, over 1” up to 2”
a. single bloom
b. spray
Class 41 Miniflora rose, intermediate bloom
a. single bloom b. spray
Class 42 Polyantha, spray

SECTION E-ARBOREAL “This Land Is Your Land”

Specimens of dwarf for miniature cultivars may not exceed 18” in length with nodes and an apical tip.
Class 43 Conifer, 1 specimen named

Class 44 Deciduous, 1 specimen named
a. flowering b. foliage c. fruited
Class 45 Shrub, evergreen, 1 specimen named

SECTION F- SMALL VEGETABLES AND FRUIT “Ghost of Freedom”

Classes 50 and 57 will be exhibited in water. All other classes in this section will be exhibited on white 6” paper plates, furnished by committee

Class 46 *Allium cepa* Onions, 3 specimens
Class 47 *Asparagus officinalis* Asparagus, 3 specimens, up to 6” long
Class 48 *Brassica Broccoli*, 1 head
Class 49 *Fragaria x ananassa* strawberries, 5 specimens
Class 50 *Lactuca serriola* Lettuce, 1 plant in water
Class 51 *Phaseolus vulgaris*, 5 specimens
a. Wax beans
b. Green beans
Class 52 *Pisum sativum*s Peas 3specimens, in pod
a. Edible pod
b. Shell Pod
Class 53 *Prunus cerasus* Cherries, 5 specimens, stems attached
Class 54 *Raphanus sativus* Radish, ½” to 1” mature size, 5 specimens
Class 55 *Rubus idaeus* Raspberries, 5 specimens, Stems removed
Class 56 *Solanum tuberosum* Potatoes, new, 3 specimens
Class 57 *Spinacia oleracea* Spinach, 1 plant in water
Class 58 Any other **small** vegetable of fruit, named, 5 specimens

SECTION G-PETITE HERBS “Red, White, and Blue”

Exhibited with 1 stem in water.
Class 59 *Allium schoenoprasum* Chives
Class 60 *Anethum graveolens* Dill
Class 61 *Ocimum basilicum* Basil
Class 62 *Petroselinum crispum* Parsley
Class 63 *Rosmarinus officinalis* Rosemary
Class 64 *Salvia officinalis* Sage
Class 65 *Satureja* Savory
Class 66 *Thymus serpyllum* Thyme
Class 67 Any other herb, named

SECTION H-CONTAINER GROWN PLANTS “This Is My Country”

All containers are limited to maximum 6” diameter. Double-potting allowed
Class 68 Cactus
Class 69 *Saintpaulia* African violet, Single crown-except species and trailers
a. Semi-miniature
b. Miniature
Class 70 Succulent
Class 71 Any other **small** plant grown in container

SECTION I-COLLECTABLES “An American Trilogy”

A collection of 5 or more different specimens of **naturally small growth** and or designated as dwarf varieties or cultivars of dwarf plants by nurseries of societies (HB Page 11) all must be individually labeled and exhibited in separate containers.
Class 72 Cut roses
Class 73 Cut annuals

Class 75 Cut bulbous plants
Class 76 Cacti
Class 77 Succulents
Class 78 Herbs
Class 79 Hostas
Class 80 Heuchera
Class 81 Container-grown plants

SECTION J- DISPLAYS “Battle Cry of Freedom”

A display of 5 or more specimens of **naturally small growth**/or those designated as dwarf varieties or cultivars of dwarf plants by nurseries or societies. See HB, p 11. All must be individually labeled and exhibited in separate containers. Displays are staged for artistic effect as well as cultural perfection, with plant material dominant.

Class 82 Cut roses
Class 83 Cut annuals
Class 84 Cut perennials
Class 85 Cut bulbous plants
Class 86 Cacti
Class 87 Succulents
Class 88 Herbs
Class 89 Hostas
Class 90 Heuchera
Class 91 Container plants

Division II Design

“Beautiful Country”

Award of Design Excellence Offered

Design Rules

1. The NG Exhibit Policies are printed in the Handbook for Flower Shows Chapter 7, Exhibiting in the Design Division, NGC Policies and Guidelines.
2. A design entered in competition must be the current work of only one exhibitor and that exhibitors name must appear on the entry card.
3. An exhibitor may enter as many classes in the Design Division as desired unless the schedule limits the number of entries but only one exhibit per class.
4. Fresh plant material may not be treated in any manner. Plant material that has been treated to alter its exterior appearance may be used only in its dried state.
5. The designer has the freedom to choose Traditional or Creative style with any design type listed unless restricted by the schedule.
6. The exhibitor is required to conform to the stated description and limitations of the Design Type if named in the class.
7. Rules for Design Types, Advanced Design types, Table Designs and Table Appointments are printed in the Handbook for Flower Shows. Chapter 14.
8. Entries in the Design Classes should be made in advance with the Design Entries Chairman. If a designer is unable to fulfill an assignment, it is the designer’s responsibility to provide a replacement and to notify the Design Entries Chairman.
9. Plant material used in designs need not have been grown by the exhibitor unless the schedule requires it

10. All plant material used in the design must be listed on a 3"x5" index card provided by exhibitor or committee.
11. No artificial flowers, foliage fruits or vegetables are permitted in the Design Division.
12. Landscapes or scenes are not permitted in the Design Division.
13. Plant materials and non-plant materials permitted and not permitted in the Design division are listed in HB pp.80-81.
14. Designer is on his/her honor that the design being entered has not been previously entered or judged in an NGC flower show.
15. The Design Scale of Points is listed in HB p 130.
16. American Flag or other country flag can not be used.

DIVISION II—DESIGN “Beautiful Country”

Required panel or niche required, size stated with each class. Black table covering provided.

SECTION A- TRICOLOR “Beautiful for Patriot Dreams”

Class 1. “Great Smokey Mountains” 5”

-Consultant

Class 2. “Niagara Falls” 8” (some form of water)

-Consultant

Class 3. “Grand Canyon” 12” Monochromatic

-Consultant:

SECTION B-DISTINCTION “From Sea to Shining Sea”

Class 4. “Above the Fruited Plain” 5”

-Consultant:

Class 5. “Rockets Red Glare” 8”

-Consultant:

Class 6. “Amber Waves of Grain” 12”

-Consultant:

SECTION C-DESIGNERS CHOICE “America!! America!! ”

Class 7. “U. S. A. Sports” 5”

-Consultant:

Class 8. “Dance Around the Clock” 8”

-Consultant:

Class 9. “ Together We Stand” 12” (Spatial Thrust)

-Consultant:

SECTION D-TABLE ARTISTRY “Crown Thy Good With Brotherhood”

Class 10. “4th of July” 12” Exhibition Table

-Consultant:

Class 11. “Boston Tea Party” Table for two. Table supplied (8”x 8” 5” high)

-Consultant:

Class 12. “American Bed & Breakfast” Tray up to 8”

-Consultant:

DIVISION III BOTANICAL ARTS

“Creative Hobbies”

Botanical Arts Artistic Crafts Award offered

Botanical Arts Rules

- 1.All Botanical Arts Horticulture, Design and Artistic Crafts exhibits must contain some plant material.
- 2.No artificial plant material is permitted in any exhibit.
3. The Scale of Points for judging Botanical Arts, Horticulture, Design, Artistic Crafts and Photography are listed in chapter 14 of the HB.
- 4.The General Guidelines for all Designs apply as printed in Chapter 11 of the HB, including a card provided by the exhibitor and listing plant material used in the design.
- 5.The rules for Botanical Artistic Crafts are printed in the HB, Chapter 10.
- 6.The Botanical Arts Classification committee will refuse to place any designs that contain plant material listed on the Iowa Noxious Weed List. <https://crops.extension.iastate.edu/encyclopedia/iowas-noxious-weed-law-chapter-317>

SECTION A-ARTISTIC CRAFTS “Life In America”

All crafts are decorated with pieces of nature, (rocks, seeds, flowers dried or fresh, ect.)

Class 1. “Fairy Garden” A small fairy garden under 12” diameter

-Consultant:

Class 2. “Patriotic Holiday” Wrap a package no larger than 12”.

-Consultant:

Class 3. “Patriotic Bird House “no larger than 12”

-Consultant:

Spring Issue will have the Consultant listed

FGCI 2026 Flower Show schedule

America the Beautiful

GENERAL RULES

1. This Flower Show conforms to the standards established by National Garden Clubs, Inc, (NGC). [The Handbook for flower Shows](#) (HB), 2017 Edition, with revisions printed in The National Gardener Magazine (NG) is the authority for all issues not covered by the schedule, which is the law of the show.
2. 3. 4. Only members of a FGCI Garden Club and invited guests may enter the show. Horticulture entry cards will be available the day of the show. Entries in the Design Division must be pre-registered with the consultant for each design class. See class for name, phone number, and/or email. The Design Entries Chair will prepare all entry cards for all design classes and give them to the design exhibitors on the day of the show.
5. 6. 7. Each Exhibitor is limited to one entry per class except in the Horticulture Division. All exhibits will be accepted from 11am-3pm on Monday June 15, 2026. Judging will begin at 4 pm June 15, 2026. Only Show Chairs, Classification Chairs, Judges and clerks will be allowed on the show floor during the time of judging. Judging will be by the NGC Standard System of Awarding, HB p.5 and any additions found in the National Gardener.
8. The Classification Chairs for each Division checks exhibits for conformity to the schedule prior to judging. Final determination for conformance is the Judges responsibility.
9. The General Chairs and the Classification chairs must be available during all judging for possible consultations. They along with the Judges and Clerks, are the only personnel allowed on the floor during judging.
10. The decisions of the judges are final. Awards may be withheld if not merited.
11. There must be an emphasis on fresh and/or dried plant material. No artificial plant material will be allowed in a division.
12. The Federated Garden Clubs of Iowa will strive to assure the safety of all items after arrival and placement, but is not responsible for any loss or damage to exhibits.
13. Plants on the state's endangered or conservative plant list must be grown by the exhibitor or collected in a legal manner and so identified. (State policy prevails). Noxious weeds and plants on the state's invasive plant list Are not permitted in any Division. List of Noxious weed can be downloaded at:
<https://crops.extension.iastate.edu/encyclopedia/iowas-noxious-weed-law-chapter-317>

AWARDS

NGC Standard system of Awards

- Only one first place (blue) ribbon per class or sub-class. Must score 90 or above.
- Only one second place (red) ribbon per class or sub-class. Must score 85 or above.
- Only one third place (yellow) ribbon per class or sub class. Must score 80 or above.
- One or more honorable mention (white) ribbons as merited. Must score 75 or above.

Horticulture NGC Top Exhibitor Awards

- The Award of Horticulture Excellence will be offered in Division I, Horticulture. (See Handbook, P 40).
- Arboreal Award will be offered in Division I, section E. (See Handbook, P 40).
- Seven Awards of Merit will be offered in Section A, B, C, D, F, G, H, (See Handbook, P 41).

Collectors showcase may be offered for the highest blue ribbon winner scoring 95 points or above and correctly named in class I and J.

Design Division NGC Top Exhibitor Awards

The Award of Design Excellence will be offered in Division II, Design. (See Handbook, P 42).

One Tri-color Award will be offered in Section A. (See Handbook, P 43).

One Distinction Award will be offered in Section B. (See Handbook, P42).

One Designers Choice will be offered in Section C. (See Handbook, P 42).

One Table Artistry Award will be offered in Section D. (See Handbook, P 43).

Botanical Arts NGC Top Exhibitor Awards

One Botanical Arts Artistic Crafts Award will be offered in Section A. (See Handbook, P 44).

Other Awards

Two Sweepstake Awards will be offered-One in Horticulture Division and one in the Design Division, Counting only blue ribbons. Red ribbons will be counted to break ties. (See Handbook, P 46)

Federated Garden Clubs of Iowa Certificates of Excellence (formerly Traveling Trophies)

The following Certificates of Excellence will be available to members of the FGCI.

Horticulture Division

Rusk Certificate of Excellence to the Award of Horticultural Excellence winner.

Smith Certificate of Excellence to the Horticulture Sweepstakes winner.

Otto Certificate of Excellence awarded by the State President and Flower show Chairmen to a worthy exhibit in the Horticulture Division that did not receive and NGC Top Exhibitor award.

Design Division

Williamson Certificate of Excellence to the Designer's Choice Award winner.

Barb Sylvester Certificate of Excellence to the highest scoring Award winner. (Petite)

Thomas Certificate of Excellence to the highest scoring Novice winner. (Design must score 90+)

Mable Prior Certificate of Excellence to any worthy design exhibit (90+) by a designer other than a judge.

Willasson Certificate of Excellence to the Design Sweepstakes winner.

Davidson Certificate of Excellence awarded by the State President and Flower Show Chairmen to a worthy exhibit in the Design Division that did not receive a NGC Top Exhibitor Award.

Fran Smith Certificate of Excellence for the best second place floral design in the show.

Division I Horticulture

"Beautiful Patriotic Songs"

Award of Horticulture Excellence Offered

Horticulture Rules

The NGC Policies are printed in the Handbook for Flower Shows Chapter 6, Exhibiting in the Horticulture Division. Page 61, VI Petite Horticulture.

The rules for a single species cut or container grown specimen are listed in the Handbook for Flower Shows or its supplement, Horticulture Exhibiting and Judging.

The Definition of Petite Horticulture: Naturally small growth, or those designated as dwarf or miniature varieties or cultivars by nurseries and plant societies

4. Specimens with a class designation in the schedule may not be entered in the “any Other Worthy Class.
5. 6. All plant material must be fresh and have been grown by the exhibitor. Exhibits must have been in the possession of the exhibitor for no fewer than 90 days. Exception: early maturing seeds/transplants and forced bulbs, corms/tubers/rhizomes, and early maturing crops. Arboreal require ownership of 6 months. Refer to the chart on (HB p.55) for species.
7. 8. Entry cards (HB p. 57) fill out in pencil or waterproof ink. Plant material must be in its natural state and may not be altered by the application (treatment) of oil, commercial “shine” products, etc. that artificially change the natural color and texture.
9. Cut specimens must be displayed in clear bottles provided by the exhibitor of suitable and proportionate to specimen. Cut specimens should not have foliage below the water line.
10. All specimens should be correctly labeled with their binomial names or the currently accepted scientific identification for their educational value. Common name may also be added (HB p. 53-54) Specimens with a class designation in the schedule may not be listed in the “any other worthy” class.
11. An exhibitor may make more than one entry per class if each entry is a different species, variety, cultivar, type or color.
12. Wedging in the neck of a container to improve the pose of the specimen is permitted. Wedging may be visible but must not detract from the cut specimen. Plastic wedging to be provided by exhibitor.
13. Double potting is permitted, but the inner pot must not be visible.
14. The Classification Chairmen have the authority to subdivide classes by color, form, size, variety, cultivar or other distinguishing characteristics. (HB p. 3-4).
15. The Scale of Points for judging horticulture is listed on (HB p. 129).

DIVISION I HORTICULTURE “BEAUTIFUL PATRIOTIC SONGS”

SECTION A -ANNUALS “You’re In The Army Now”

- Class 1 *Ageratum*, 1 stem
- Class 2 *Angelonia augustifolia* Angelonia, 1 bloom
- Class 3 *Antirrhinum* Snapdragon, 1 stem
- Class 4 *Asteraceae zinnia* Zinnia, 1 disbudded stem
- Class 5 *Balsaminaceae* Impatiens, 1 stem
- Class 6 *Begoniaceae Begonia*, Fibrous rooted, 1 stem
- Class 7 *Calibrachoa* Million Bells, 1 spray
- Class 8 Celosia, 1 stem
- Class 9 *Centaurea cyanus* Bachelor’s Button, 1 stem
- Class 10 *Solenostemon scutellarioides* Coleus leaf 1” wide or smaller, 1 stem
- Class 11 *Dianthus* Annual Pinks, 1 stem
- Class 12 *Diascia* Twinspur, 1 Spray
- Class 13 *Lantana*, 1 stem
- Class 14 *Lobularia* Alyssum, 1 stem
- Class 15 *Solanaceae* Petunia, 1 spray
- Class 16 *Tagetes* Marigold See HB 142
 - a. 1 disbudded stem with large blossom
 - b. 1 spray
- Class 17 *Thymophylla* Dahlberg Daisy, 3 blooms
- Class 18 *Verbena*, 1 stem
- Class 19 *Violaceae* Viola or Pansy, 3 identical blooms without foliage
- Class 20 Any other miniature annual, named, 1 stem, bloom, or spray

Section B- Perennials “Blowin` In the Wind”

- Class 21 *Aquilegia* Columbine, 1 spray
a. single b. double
Class 22 *Campulacae* Bellflower, 1 stem
Class 23 *Coreopsis* Coreopsis, 1 bloom
Class 24 *Dianthus* Pinks, 1 stem
Class 25 *Dicentra* Fern-leaf bleeding heart, 1 stem
Class 26 Grasses and Sedges (must be fresh), 5 stems
Class 27 *Gypsophila* Baby’s Breath, 1 spray
Class 28 *Hemerocallis* Daylily, 1 stem
a. 2” or less
1. Single
2. Double
b. Over 2” and up to 3 “
1. Single
2. Double
c. Over 3” and up to 4 1/2”
1. Single
2. Double
Class 29 *Hueuchera* Coral Bell
a. 3 leaves (foliage)
b. 3 blooms
Class 30 *Hosta* Hosta, 1 leaf, based on mature size
a. Less than 1” across
b. 1” but less than 2”
c. 2” up to 4”
Class 31 *Nepeta* Catmint, 1 stem
Class 32 *Platycodon grandiflora* Balloon flower, 1 stem
Class 33 *Sedum*, 1 stem
Class 34 Any other **small** perennial, named, 1 stem, bloom or spray

SECTION C- BULBOUS “Anchors Away”

- Class 35 *Allium*, 1 stem
Class 36 *Lilium* Miniature Lily, 1 stem, anthers present named
Class 37 *Fritillaria meleagris* Fritillaria, 1 specimen
Class 38 Any other flowering bulb, corm or tuber, 1 stem named

SECTION D- Rosa MINIATURE-FLORA ROSES “The Spirit Of America”

Exhibited in water with two sets of leaves. See HB pp. 147-148 “A high scoring miniature has two or more fresh florets in bloom, buds in all stages of development, and more

open blooms than buds.”

- Class 39 Micro-miniature rose, 1” or less
a. single bloom
b. spray
Class 40 Miniature rose, over 1” up to 2”
a. single bloom
b. spray
Class 41 Miniflora rose, intermediate bloom
a. single bloom b. spray
Class 42 Polyantha, spray

SECTION E-ARBOREAL “This Land Is Your Land”

Specimens of dwarf for miniature cultivars may not exceed 18” in length with nodes and an apical tip.
Class 43 Conifer, 1 specimen named

Class 44 Deciduous, 1 specimen named
a. flowering b. foliage c. fruited
Class 45 Shrub, evergreen, 1 specimen named

SECTION F- SMALL VEGETABLES AND FRUIT “Ghost of Freedom”

Classes 50 and 57 will be exhibited in water. All other classes in this section will be exhibited on white 6” paper plates, furnished by committee

Class 46 *Allium cepa* Onions, 3 specimens
Class 47 *Asparagus officinalis* Asparagus, 3 specimens, up to 6” long
Class 48 *Brassica Broccoli*, 1 head
Class 49 *Fragaria x ananassa* strawberries, 5 specimens
Class 50 *Lactuca serriola* Lettuce, 1 plant in water
Class 51 *Phaseolus vulgaris*, 5 specimens
a. Wax beans
b. Green beans
Class 52 *Pisum sativum* Peas 3specimens, in pod
a. Edible pod
b. Shell Pod
Class 53 *Prunus cerasus* Cherries, 5 specimens, stems attached
Class 54 *Raphanus sativus* Radish, ½” to 1” mature size, 5 specimens
Class 55 *Rubus idaeus* Raspberries, 5 specimens, Stems removed
Class 56 *Solanum tuberosum* Potatoes, new, 3 specimens
Class 57 *Spinacia oleracea* Spinach, 1 plant in water
Class 58 Any other **small** vegetable of fruit, named, 5 specimens

SECTION G-PETITE HERBS “Red, White, and Blue”

Exhibited with 1 stem in water.
Class 59 *Allium schoenoprasum* Chives
Class 60 *Anethum graveolens* Dill
Class 61 *Ocimum basilicum* Basil
Class 62 *Petroselinum crispum* Parsley
Class 63 *Rosmarinus officinalis* Rosemary
Class 64 *Salvia officinalis* Sage
Class 65 *Satureja* Savory
Class 66 *Thymus serpyllum* Thyme
Class 67 Any other herb, named

SECTION H-CONTAINER GROWN PLANTS “This Is My Country”

All containers are limited to maximum 6” diameter. Double-potting allowed
Class 68 Cactus
Class 69 *Saintpaulia* African violet, Single crown-except species and trailers
a. Semi-miniature
b. Miniature
Class 70 Succulent
Class 71 Any other **small** plant grown in container

SECTION I-COLLECTABLES “An American Trilogy”

A collection of 5 or more different specimens of **naturally small growth** and or designated as dwarf varieties or cultivars of dwarf plants by nurseries of societies (HB Page 11) all must be individually labeled and exhibited in separate containers.
Class 72 Cut roses
Class 73 Cut annuals

Class 75 Cut bulbous plants
Class 76 Cacti
Class 77 Succulents
Class 78 Herbs
Class 79 Hostas
Class 80 Heuchera
Class 81 Container-grown plants

SECTION J- DISPLAYS “Battle Cry of Freedom”

A display of 5 or more specimens of **naturally small growth**/or those designated as dwarf varieties or cultivars of dwarf plants by nurseries or societies. See HB, p 11. All must be individually labeled and exhibited in separate containers. Displays are staged for artistic effect as well as cultural perfection, with plant material dominant.

Class 82 Cut roses
Class 83 Cut annuals
Class 84 Cut perennials
Class 85 Cut bulbous plants
Class 86 Cacti
Class 87 Succulents
Class 88 Herbs
Class 89 Hostas
Class 90 Heuchera
Class 91 Container plants

Division II Design

“Beautiful Country”

Award of Design Excellence Offered

Design Rules

1. The NG Exhibit Policies are printed in the Handbook for Flower Shows Chapter 7, Exhibiting in the Design Division, NGC Policies and Guidelines.
2. A design entered in competition must be the current work of only one exhibitor and that exhibitors name must appear on the entry card.
3. An exhibitor may enter as many classes in the Design Division as desired unless the schedule limits the number of entries but only one exhibit per class.
4. Fresh plant material may not be treated in any manner. Plant material that has been treated to alter its exterior appearance may be used only in its dried state.
5. The designer has the freedom to choose Traditional or Creative style with any design type listed unless restricted by the schedule.
6. The exhibitor is required to conform to the stated description and limitations of the Design Type if named in the class.
7. Rules for Design Types, Advanced Design types, Table Designs and Table Appointments are printed in the Handbook for Flower Shows. Chapter 14.
8. Entries in the Design Classes should be made in advance with the Design Entries Chairman. If a designer is unable to fulfill an assignment, it is the designer’s responsibility to provide a replacement and to notify the Design Entries Chairman.
9. Plant material used in designs need not have been grown by the exhibitor unless the schedule requires it

10. All plant material used in the design must be listed on a 3"x5" index card provided by exhibitor or committee.
11. No artificial flowers, foliage fruits or vegetables are permitted in the Design Division.
12. Landscapes or scenes are not permitted in the Design Division.
13. Plant materials and non-plant materials permitted and not permitted in the Design division are listed in HB pp.80-81.
14. Designer is on his/her honor that the design being entered has not been previously entered or judged in an NGC flower show.
15. The Design Scale of Points is listed in HB p 130.
16. American Flag or other country flag can not be used.

DIVISION II—DESIGN “Beautiful Country”

Required panel or niche required, size stated with each class. Black table covering provided.

SECTION A- TRICOLOR “Beautiful for Patriot Dreams”

Class 1. “Great Smokey Mountains” 5”

-Consultant

Class 2. “Niagara Falls” 8” (some form of water)

-Consultant

Class 3. “Grand Canyon” 12” Monochromatic

-Consultant:

SECTION B-DISTINCTION “From Sea to Shining Sea”

Class 4. “Above the Fruited Plain” 5”

-Consultant:

Class 5. “Rockets Red Glare” 8”

-Consultant:

Class 6. “Amber Waves of Grain” 12”

-Consultant:

SECTION C-DESIGNERS CHOICE “America!! America!! ”

Class 7. “U. S. A. Sports” 5”

-Consultant:

Class 8. “Dance Around the Clock” 8”

-Consultant:

Class 9. “ Together We Stand” 12” (Spatial Thrust)

-Consultant:

SECTION D-TABLE ARTISTRY “Crown Thy Good With Brotherhood”

Class 10. “4th of July” 12” Exhibition Table

-Consultant:

Class 11. “Boston Tea Party” Table for two. Table supplied (8”x 8” 5” high)

-Consultant:

Class 12. “American Bed & Breakfast” Tray up to 8”

-Consultant:

DIVISION III BOTANICAL ARTS

“Creative Hobbies”

Botanical Arts Artistic Crafts Award offered

Botanical Arts Rules

- 1.All Botanical Arts Horticulture, Design and Artistic Crafts exhibits must contain some plant material.
- 2.No artificial plant material is permitted in any exhibit.
3. The Scale of Points for judging Botanical Arts, Horticulture, Design, Artistic Crafts and Photography are listed in chapter 14 of the HB.
- 4.The General Guidelines for all Designs apply as printed in Chapter 11 of the HB, including a card provided by the exhibitor and listing plant material used in the design.
- 5.The rules for Botanical Artistic Crafts are printed in the HB, Chapter 10.
- 6.The Botanical Arts Classification committee will refuse to place any designs that contain plant material listed on the Iowa Noxious Weed List. <https://crops.extension.iastate.edu/encyclopedia/iowa-noxious-weed-law-chapter-317>

SECTION A-ARTISTIC CRAFTS “Life In America”

All crafts are decorated with pieces of nature, (rocks, seeds, flowers dried or fresh, ect.)

Class 1. “Fairy Garden” A small fairy garden under 12” diameter

-Consultant:

Class 2. “Patriotic Holiday” Wrap a package no larger than 12”.

-Consultant:

Class 3. “Patriotic Bird House “no larger than 12”

-Consultant:

Spring Issue will have the Consultant listed